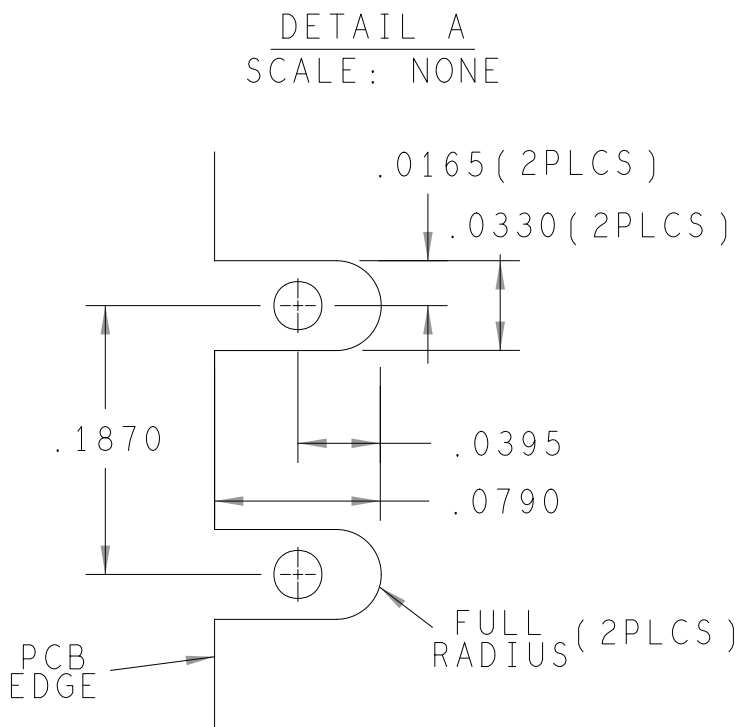
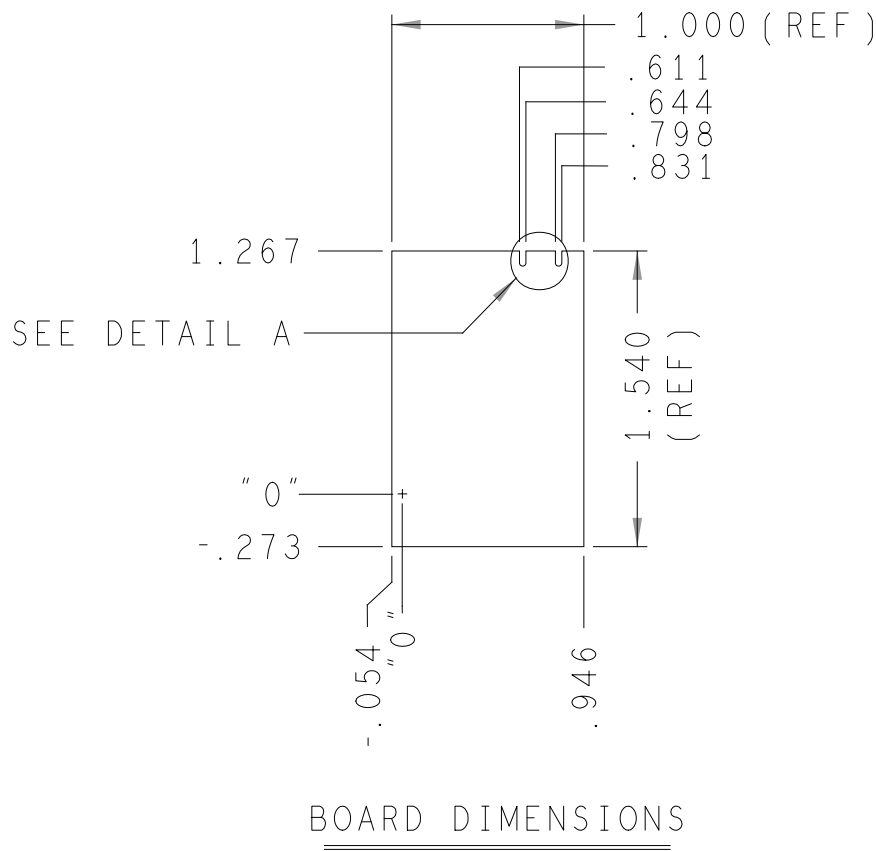


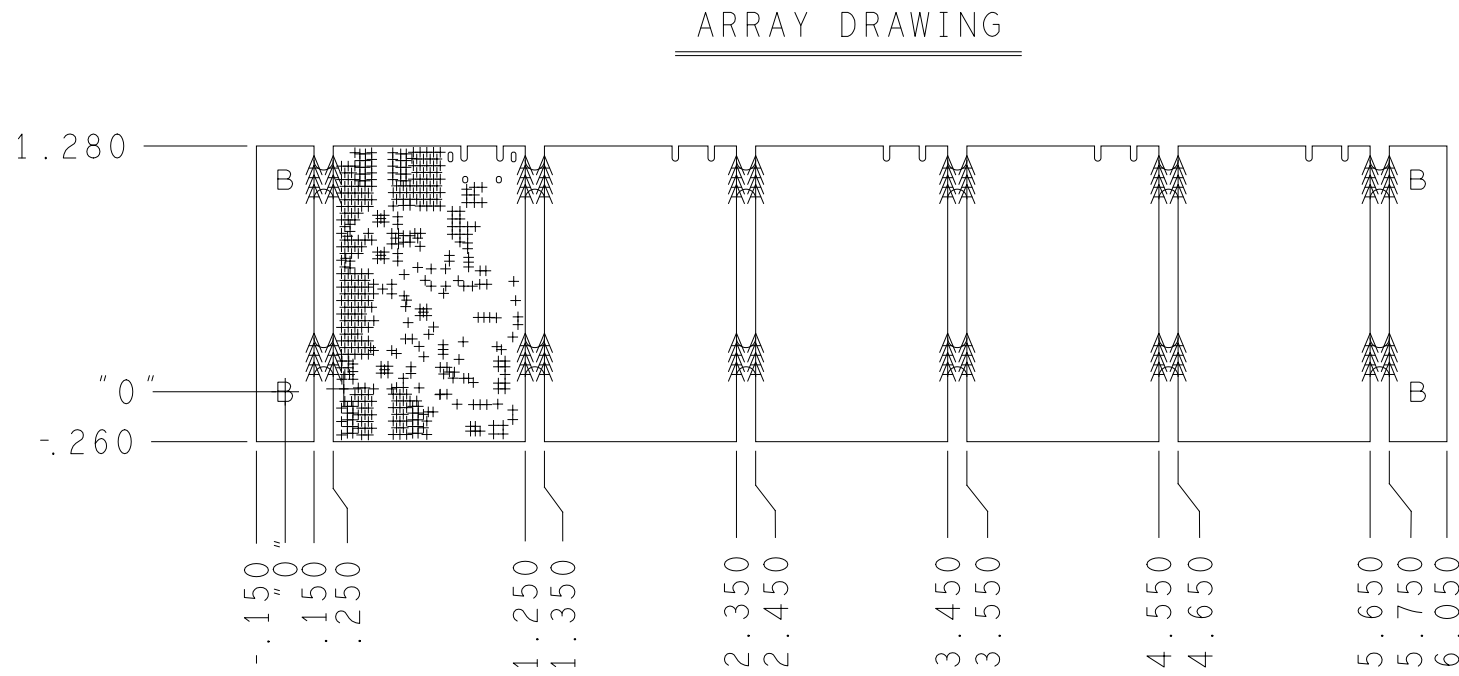
REVISIONS			
REV	DESCRIPTION	DATE	APPROVED
A	INITIAL RELEASE	03OCT19	E. REYTA
B	AS PER ECR-091486	05JUN20	E. REYTA
B1	AS PER ECR-099072	22OCT20	E. REYTA
C	AS PER ECR-101021	22JAN21	E. REYTA
C1	AS PER ECR-102036	22MAR21	E. REYTA
D	AS PER ECR-103809	03SEP21	E. REYTA



HOLE TOLERANCE

UNLESS SPECIFIED
PLATED: +/- 3 MILS
NON-PLATED: +/- 2 MILS

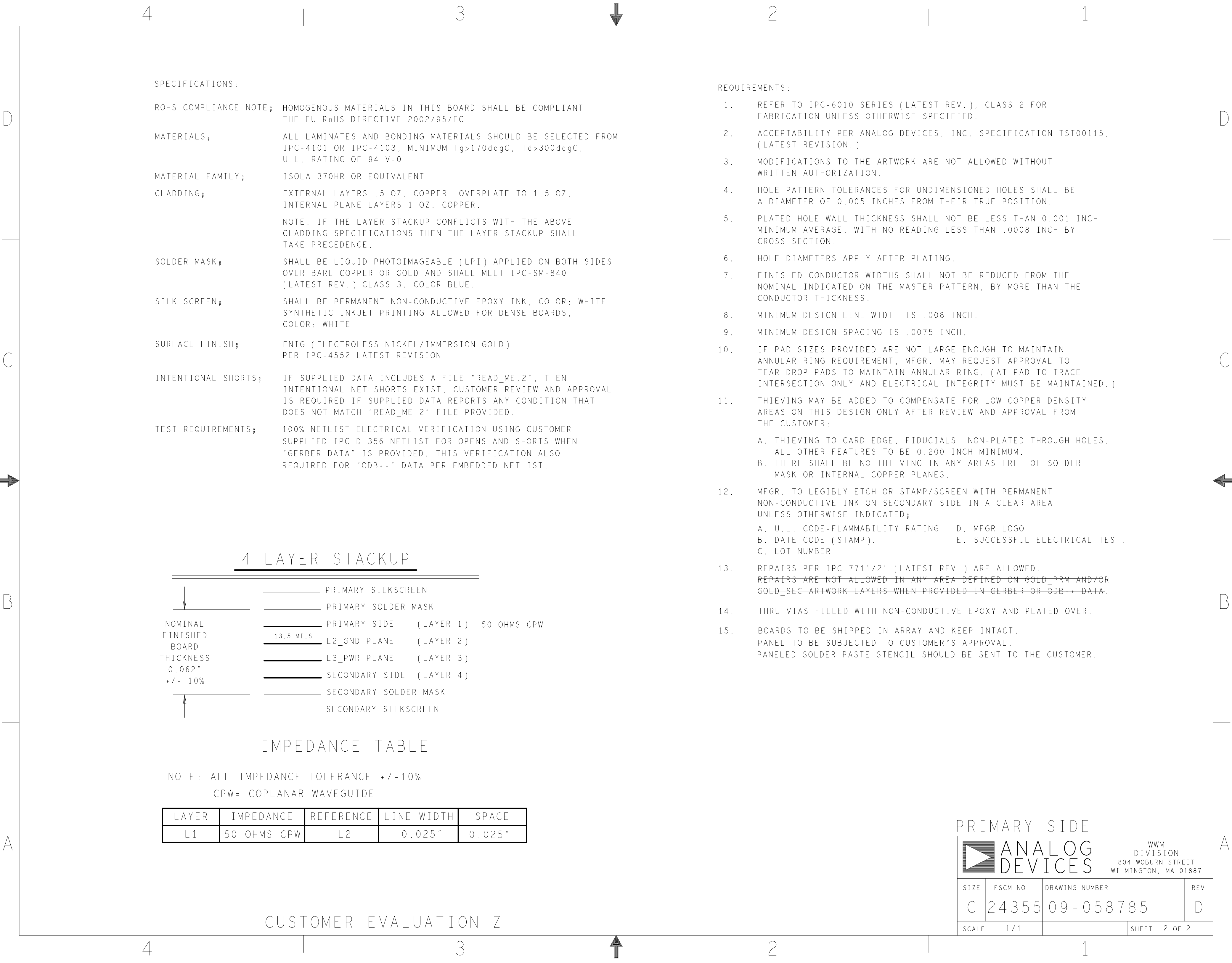
DRILL CHART: TOP to BOTTOM				
ALL UNITS ARE IN MILS				
FIGURE	SIZE	PLATED	QTY	TOLERANCE/NOTES
+	10.0	PLATED	440	DIA MAX/SEE NOTE 14
A	25.0	NON-PLATED	96	
B	125.0	NON-PLATED	4	
°	34.0x26.0	PLATED	2	
°	51.0x24.0	PLATED	2	



PRIMARY SIDE

UNLESS OTHERWISE SPECIFIED DIMENSIONS ARE IN INCHES TOLERANCES DECIMALS FRACTIONS ANGLES .XX -.010 --1/32 -- 2 .XXX -.005 .XXXX -.0050			APPROVAL		DATE		<div><div></div><div>ANALOG DEVICES</div></div> <div>WWM DIVISION 804 WOBURN STREET WILMINGTON, MA 01887</div>											
			TEMPLATE ENGINEER N/A															
MATERIAL			HARDWARE SERVICES M. JOSE		03OCT19		TITLE FABRICATION EVAL - CN0534 - EBZ											
			HARDWARE SYSTEMS N/A															
			TEST ENGINEER N/A															
			COMPONENT ENGINEER A. CAUILAN-AGENA		03OCT19													
FINISH			TEST PROCESS N/A				SIZE C				FSCM NO 24355		DRAWING NUMBER 09-058785		REV D			
			HARDWARE RELEASE K. JABATAN		03OCT19													
			DESIGNER M. NICOPOR		03OCT19													
			PTD ENGINEER E. REYTA		03OCT19													
			CHECKER N/A															
DO NOT SCALE DWG							SCALE		1 / 1						SHEET		1 OF 2	

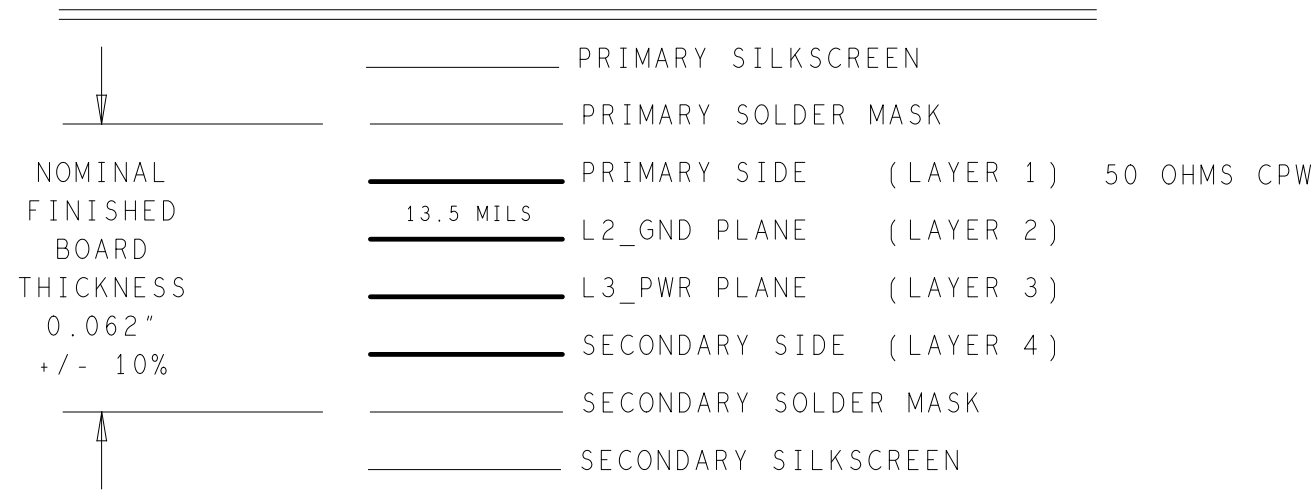
CUSTOMER EVALUATION Z



SPECIFICATIONS:

- ROHS COMPLIANCE NOTE; HOMOGENOUS MATERIALS IN THIS BOARD SHALL BE COMPLIANT THE EU RoHS DIRECTIVE 2002/95/EC
- MATERIALS; ALL LAMINATES AND BONDING MATERIALS SHOULD BE SELECTED FROM IPC-4101 OR IPC-4103, MINIMUM Tg>170degC, Td>300degC, U.L. RATING OF 94 V-0
- MATERIAL FAMILY; ISOLA 370HR OR EQUIVALENT
- CLADDING; EXTERNAL LAYERS .5 OZ. COPPER, OVERPLATE TO 1.5 OZ. INTERNAL PLANE LAYERS 1 OZ. COPPER.
- NOTE: IF THE LAYER STACKUP CONFLICTS WITH THE ABOVE CLADDING SPECIFICATIONS THEN THE LAYER STACKUP SHALL TAKE PRECEDENCE.
- SOLDER MASK; SHALL BE LIQUID PHOTOIMAGEABLE (LPI) APPLIED ON BOTH SIDES OVER BARE COPPER OR GOLD AND SHALL MEET IPC-SM-840 (LATEST REV.) CLASS 3. COLOR BLUE.
- SILK SCREEN; SHALL BE PERMANENT NON-CONDUCTIVE EPOXY INK, COLOR: WHITE SYNTHETIC INKJET PRINTING ALLOWED FOR DENSE BOARDS, COLOR: WHITE
- SURFACE FINISH; ENIG (ELECTROLESS NICKEL/IMMERSION GOLD) PER IPC-4552 LATEST REVISION
- INTENTIONAL SHORTS; IF SUPPLIED DATA INCLUDES A FILE "READ_ME.2", THEN INTENTIONAL NET SHORTS EXIST. CUSTOMER REVIEW AND APPROVAL IS REQUIRED IF SUPPLIED DATA REPORTS ANY CONDITION THAT DOES NOT MATCH "READ_ME.2" FILE PROVIDED.
- TEST REQUIREMENTS; 100% NETLIST ELECTRICAL VERIFICATION USING CUSTOMER SUPPLIED IPC-D-356 NETLIST FOR OPENS AND SHORTS WHEN "GERBER DATA" IS PROVIDED. THIS VERIFICATION ALSO REQUIRED FOR "ODB++" DATA PER EMBEDDED NETLIST.

4 LAYER STACKUP



IMPEDANCE TABLE

NOTE: ALL IMPEDANCE TOLERANCE +/-10%
CPW= COPLANAR WAVEGUIDE

LAYER	IMPEDANCE	REFERENCE	LINE WIDTH	SPACE
L1	50 OHMS CPW	L2	0.025"	0.025"

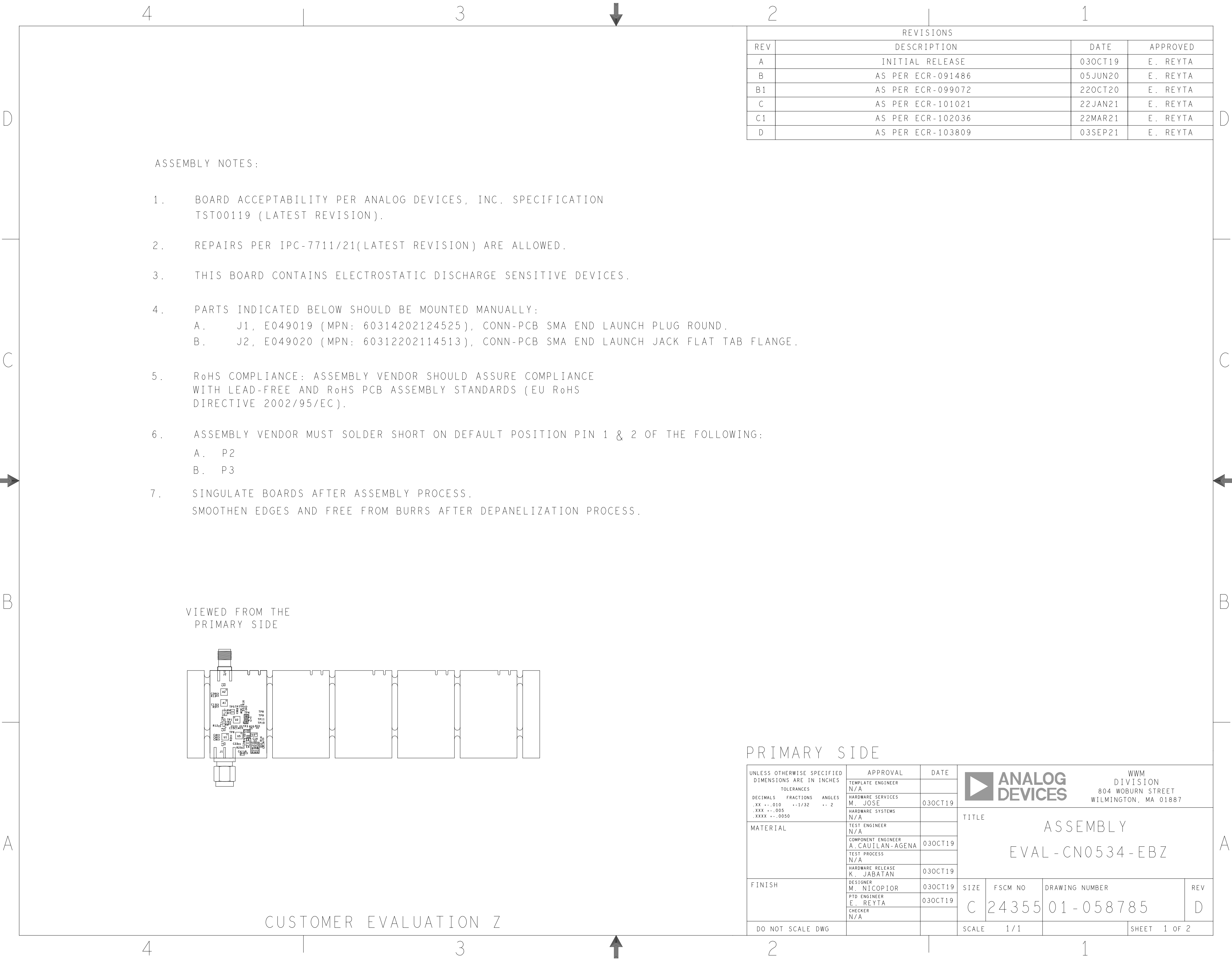
CUSTOMER EVALUATION Z

REQUIREMENTS:

- REFER TO IPC-6010 SERIES (LATEST REV.), CLASS 2 FOR FABRICATION UNLESS OTHERWISE SPECIFIED.
- ACCEPTABILITY PER ANALOG DEVICES, INC. SPECIFICATION TST00115, (LATEST REVISION.)
- MODIFICATIONS TO THE ARTWORK ARE NOT ALLOWED WITHOUT WRITTEN AUTHORIZATION.
- HOLE PATTERN TOLERANCES FOR UNDIMENSIONED HOLES SHALL BE A DIAMETER OF 0.005 INCHES FROM THEIR TRUE POSITION.
- PLATED HOLE WALL THICKNESS SHALL NOT BE LESS THAN 0.001 INCH MINIMUM AVERAGE, WITH NO READING LESS THAN .0008 INCH BY CROSS SECTION.
- HOLE DIAMETERS APPLY AFTER PLATING.
- FINISHED CONDUCTOR WIDTHS SHALL NOT BE REDUCED FROM THE NOMINAL INDICATED ON THE MASTER PATTERN, BY MORE THAN THE CONDUCTOR THICKNESS.
- MINIMUM DESIGN LINE WIDTH IS .008 INCH.
- MINIMUM DESIGN SPACING IS .0075 INCH.
- IF PAD SIZES PROVIDED ARE NOT LARGE ENOUGH TO MAINTAIN ANNULAR RING REQUIREMENT, MFGR. MAY REQUEST APPROVAL TO TEAR DROP PADS TO MAINTAIN ANNULAR RING. (AT PAD TO TRACE INTERSECTION ONLY AND ELECTRICAL INTEGRITY MUST BE MAINTAINED.)
- THIEVING MAY BE ADDED TO COMPENSATE FOR LOW COPPER DENSITY AREAS ON THIS DESIGN ONLY AFTER REVIEW AND APPROVAL FROM THE CUSTOMER:
 - THIEVING TO CARD EDGE, FIDUCIALS, NON-PLATED THROUGH HOLES, ALL OTHER FEATURES TO BE 0.200 INCH MINIMUM.
 - THERE SHALL BE NO THIEVING IN ANY AREAS FREE OF SOLDER MASK OR INTERNAL COPPER PLANES.
- MFGR. TO LEGIBLY ETCH OR STAMP/SCREEN WITH PERMANENT NON-CONDUCTIVE INK ON SECONDARY SIDE IN A CLEAR AREA UNLESS OTHERWISE INDICATED;
 - U.L. CODE-FLAMMABILITY RATING
 - DATE CODE (STAMP).
 - LOT NUMBER
 - MFGR LOGO
 - SUCCESSFUL ELECTRICAL TEST.
- REPAIRS PER IPC-7711/21 (LATEST REV.) ARE ALLOWED. ~~REPAIRS ARE NOT ALLOWED IN ANY AREA DEFINED ON GOLD_PRM AND/OR GOLD_SEC ARTWORK LAYERS WHEN PROVIDED IN GERBER OR ODB++ DATA.~~
- THRU VIAS FILLED WITH NON-CONDUCTIVE EPOXY AND PLATED OVER.
- BOARDS TO BE SHIPPED IN ARRAY AND KEEP INTACT. PANEL TO BE SUBJECTED TO CUSTOMER'S APPROVAL. PANELED SOLDER PASTE STENCIL SHOULD BE SENT TO THE CUSTOMER.

PRIMARY SIDE

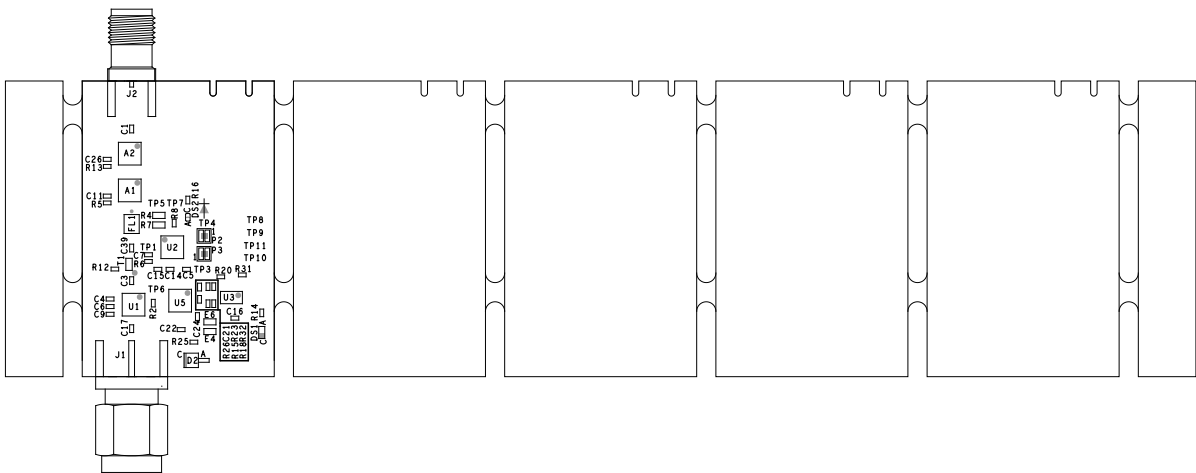
		ANALOG DEVICES		WWM DIVISION 804 WOBURN STREET WILMINGTON, MA 01887	
		SIZE	FSCM NO	DRAWING NUMBER	REV
C		24355	09-058785	D	
SCALE		1/1		SHEET 2 OF 2	



ASSEMBLY NOTES:


1. BOARD ACCEPTABILITY PER ANALOG DEVICES, INC. SPECIFICATION TST00119 (LATEST REVISION).
2. REPAIRS PER IPC-7711/21(LATEST REVISION) ARE ALLOWED.
3. THIS BOARD CONTAINS ELECTROSTATIC DISCHARGE SENSITIVE DEVICES.
4. PARTS INDICATED BELOW SHOULD BE MOUNTED MANUALLY:
A. J1, E049019 (MPN: 60314202124525), CONN-PCB SMA END LAUNCH PLUG ROUND.
B. J2, E049020 (MPN: 60312202114513), CONN-PCB SMA END LAUNCH JACK FLAT TAB FLANGE.
5. RoHS COMPLIANCE: ASSEMBLY VENDOR SHOULD ASSURE COMPLIANCE WITH LEAD-FREE AND RoHS PCB ASSEMBLY STANDARDS (EU RoHS DIRECTIVE 2002/95/EC).
6. ASSEMBLY VENDOR MUST SOLDER SHORT ON DEFAULT POSITION PIN 1 & 2 OF THE FOLLOWING:
A. P2
B. P3
7. SINGULATE BOARDS AFTER ASSEMBLY PROCESS.
SMOOTHEN EDGES AND FREE FROM BURRS AFTER DEPANELIZATION PROCESS.

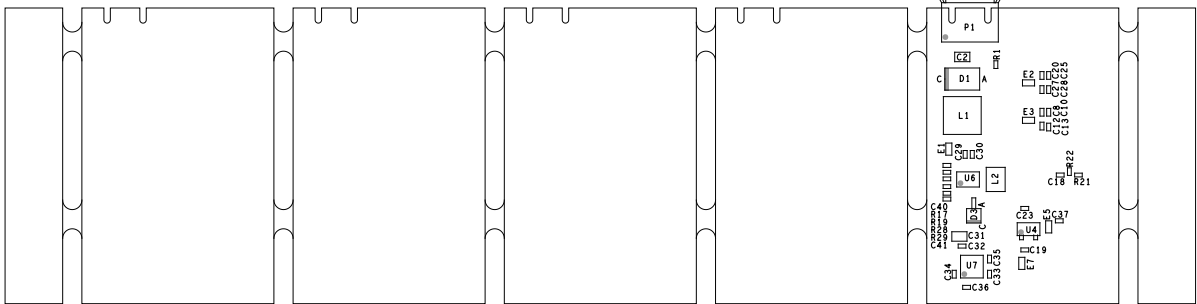
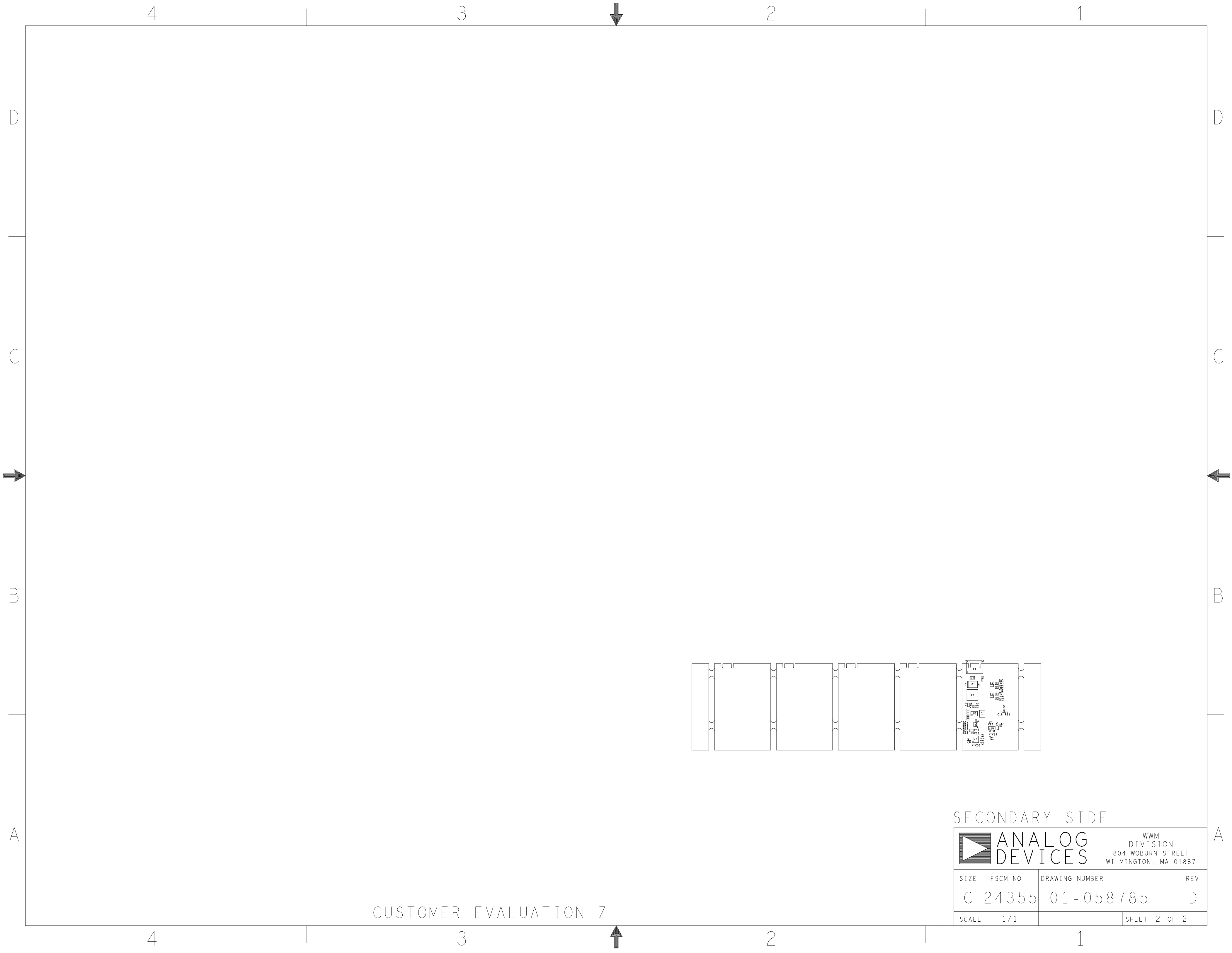
VIEWED FROM THE
PRIMARY SIDE



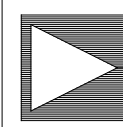
REVISIONS			
REV	DESCRIPTION	DATE	APPROVED
A	INITIAL RELEASE	03OCT19	E. REYTA
B	AS PER ECR-091486	05JUN20	E. REYTA
B1	AS PER ECR-099072	22OCT20	E. REYTA
C	AS PER ECR-101021	22JAN21	E. REYTA
C1	AS PER ECR-102036	22MAR21	E. REYTA
D	AS PER ECR-103809	03SEP21	E. REYTA

PRIMARY SIDE

UNLESS OTHERWISE SPECIFIED DIMENSIONS ARE IN INCHES		APPROVAL	DATE	 WWM DIVISION 804 WOBURN STREET WILMINGTON, MA 01887			
TOLERANCES		TEMPLATE ENGINEER N/A					
DECIMALS	FRACTIONS	ANGLES		HARDWARE SERVICES M. JOSE	03OCT19	TITLE ASSEMBLY EVAL - CN0534 - EBZ	
.XX --.010	--1/32	-- 2		HARDWARE SYSTEMS N/A			
.XXX --.005				TEST ENGINEER N/A			
.XXXX --.0050				COMPONENT ENGINEER A. CAUILAN-AGENA	03OCT19		
MATERIAL		TEST PROCESS N/A		TEST PROCESS N/A		SIZE C	
		HARDWARE RELEASE K. JABATAN	03OCT19				
		DESIGNER M. NICOPIOR	03OCT19				
		PTD ENGINEER E. REYTA	03OCT19				
FINISH		CHECKER N/A				DRAWING NUMBER 01-058785	
DO NOT SCALE DWG						REV D	
				SCALE	1/1	SHEET 1 OF 2	

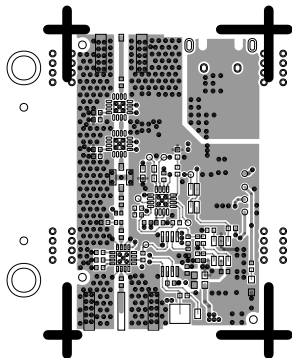


SECONDARY SIDE

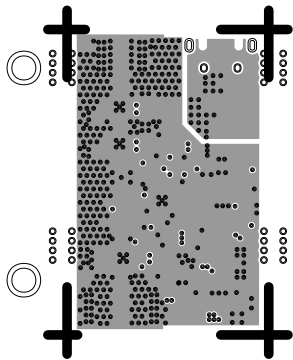
<div><div>ANALOG DEVICES</div><div>WWM DIVISION 804 WOBURN STREET WILMINGTON, MA 01887</div></div>			
SIZE	FSCM NO	DRAWING NUMBER	REV
C	24355	01-058785	D
SCALE	1 / 1	SHEET 2 OF 2	

CUSTOMER EVALUATION Z

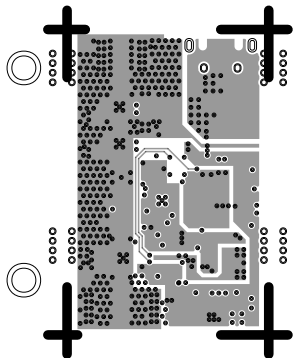
L1 PRIMARY
08-058785-01
REV D



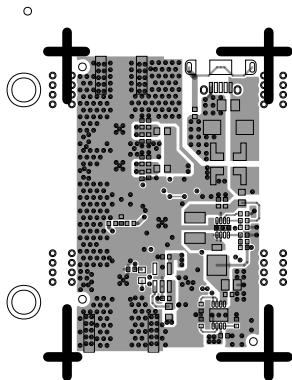
L2 GND
08-058785-07
REV D



L3 PWR
08-058785-08
REV D



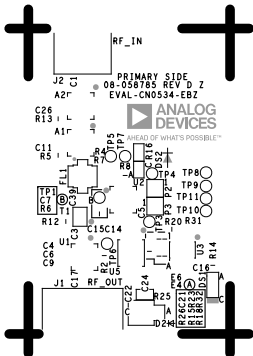
L4 SECONDARY
08-058785-02
REV D



SILKSCREEN PRIMARY

08-058785-03

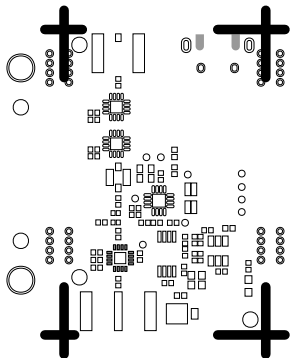
REV D



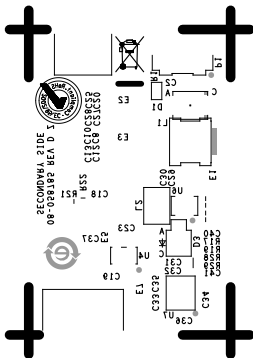
SOLDERMASK PRIMARY

08-058785-04

REV D



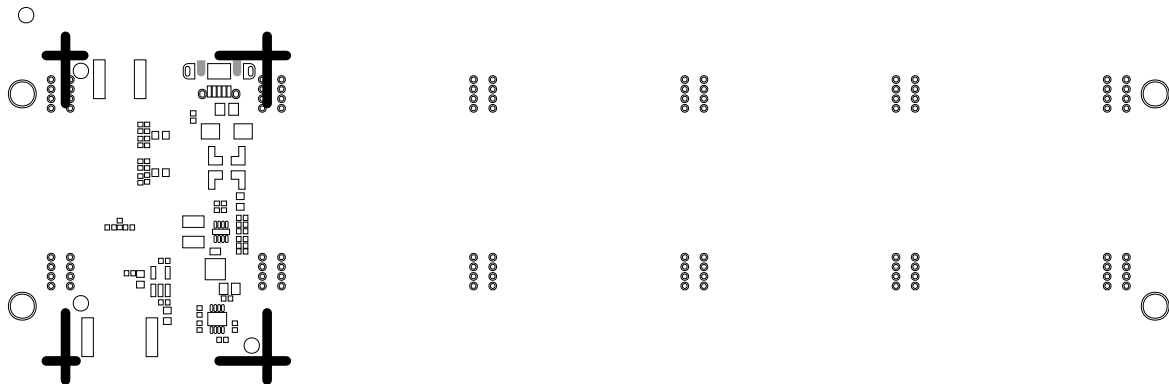
SILKSCREEN SECONDARY
08-058785-05
REV D



SOLDERMASK SECONDARY

08-058785-06

REV D



PASTEMASK PRIMARY

08-058785-09

REV D



PASTEMASK SECONDARY

08-058785-10

REV D

